

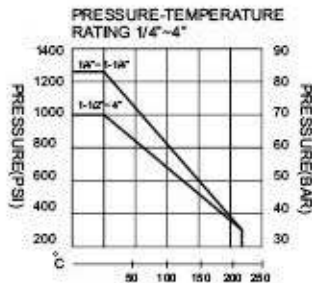
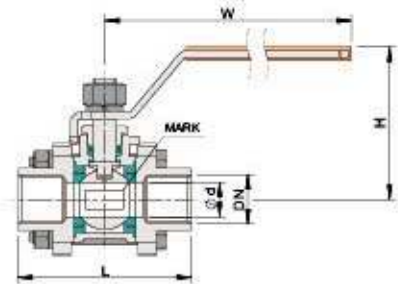
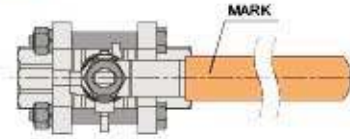
Ball Valve Full Port

3-pc Design **WR302**



Features:

- 2000WOG, PN125
- Full Port
- Locking Device Handle Upon Request
- Blow-Out Proof Stem
- PTFE Packing Sealing
- Blance Hole in Ball Slot
- Design Standard: ASME B16.34
- Precision Casting
- ISO5211 Mounting Pad Top Flange
- Testing Standard: API 598/SP-110



1000PSI/PN63
DIMENSION
L*=DIN3202-M3

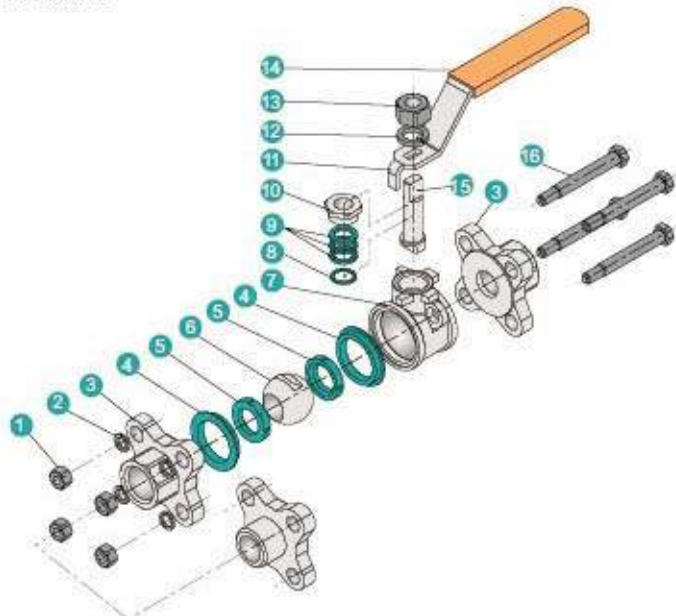
PRESSURE TESTING

| | |
|------------------------|------------|
| STANDARD PRESSURE | 1000PSI |
| SHELL PRESSURE TESTING | 10.4Mpa |
| WATER SEAL TESTING | 7.6Mpa |
| AIR SEAL TESTING | 0.4-0.7Mpa |

(unit: mm)

| SIZE | | L* | L | d | H | W | TORQUE N.M | CV |
|--------|-------|-----|-----|------|-----|-----|------------|-------|
| 1/4" | DN8 | 50 | 67 | 12.5 | 59 | 100 | 3.5 | 2 |
| 3/8" | DN10 | 60 | 67 | 12.5 | 59 | 100 | 4 | 2 |
| 1/2" | DN15 | 75 | 70 | 15 | 61 | 120 | 5 | 3.5 |
| 3/4" | DN20 | 80 | 80 | 20 | 67 | 125 | 7 | 7.1 |
| 1" | DN25 | 90 | 90 | 25 | 74 | 150 | 8 | 12.4 |
| 1-1/4" | DN32 | 110 | 110 | 32 | 82 | 160 | 15 | 20.3 |
| 1-1/2" | DN40 | 120 | 119 | 38 | 99 | 190 | 22 | 28.6 |
| 2" | DN50 | 140 | 140 | 49 | 105 | 200 | 25 | 47.5 |
| 2-1/2" | DN65 | 185 | 160 | 63 | 120 | 265 | 50 | 76 |
| 3" | DN80 | 205 | 201 | 76 | 137 | 310 | 85 | 108.4 |
| 4 | DN100 | 240 | 234 | 96 | 157 | 310 | 115 | 198 |

DRAWING



MATERIAL LIST

| ITEM | PART NAME | MATERIAL | |
|------|---------------|-------------|--------|
| 1 | NUT | A194-8 | |
| 2 | SPRING WASHER | SUS304 | |
| 3 | CAP | CF8M | CF8 |
| 4 | BODY GASKET | PTFE R-PTFE | |
| 5 | BALL SEAT | PTFE R-PTFE | |
| 6 | BALL | SUS316 | SUS304 |
| 7 | BODY | CF8M | CF8 |
| 8 | THRUST WASHER | PTFE | |
| 9 | STEM PACKING | PTFE | |
| 10 | STOP NUT | SUS304 | |
| 11 | HANDLE | SUS304 | |
| 12 | SPRING WASHER | SUS304 | |
| 13 | STEM NUT | A194-8 | |
| 14 | HANDLE COVER | PLASTIC | |
| 15 | STEM | SUS316 | SUS304 |
| 16 | BOLT | A193-B8 | |